

# WestEd's ScienceSketch Project

## A Research Study on Science Modeling

Funded by the U.S. Department of Education, WestEd, in partnership with the North Carolina State University, is examining the impact of ScienceSketch, an NGSS-aligned science modeling platform.

### Who can participate?

- 4th grade teachers who teach science.
- Participating classrooms will need 1-to-1 device access.

### Timeline

- Fall 2025 for 8 weeks.

### Research Activities

- Half of the participating classrooms will be randomly selected to use ScienceSketch (**treatment** group). Half of the teachers will continue regular science instruction and receive access to ScienceSketch later (**control** group).
- **All teachers** will complete a pre- and post-survey (10 minutes) and 3-4 logs (5 minutes). Some teachers will participate in a classroom observation and an interview.
- **Treatment** group teachers will use ScienceSketch with their students for modeling once per week and will complete 2-3 hours of virtual, self-paced professional development.
- **Control** group teachers will have access to ScienceSketch and the professional development after the study.
- Students will complete an NGSS-aligned science pre- and post-assessment (30-45 minutes) and a survey (10 minutes).

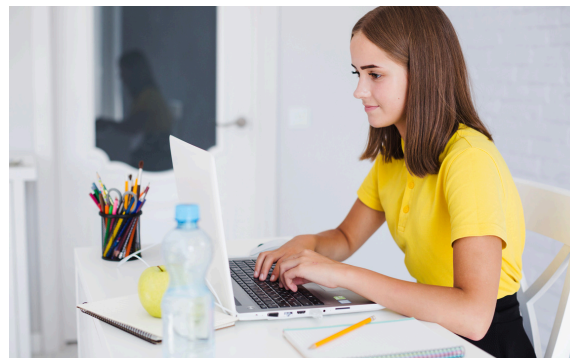
### Benefits

- No cost to participate.
- Students will practice science modeling skills to align their instruction with NGSS guidelines.

### Compensation

- Teachers will receive a stipend of up to \$500. Treatment group teachers will receive an additional \$200 for completing professional development.

### What is ScienceSketch?



ScienceSketch, developed by North Carolina State University, is a supplemental digital modeling platform.

Students draw NGSS-aligned science models in ScienceSketch and receive individualized and adaptive scaffolded feedback to practice science modeling in engaging and meaningful ways, saving teachers valuable time.



**Complete the  
Interest Form to  
Learn More!**

[tinyurl.com/sketch-interest-district](https://tinyurl.com/sketch-interest-district)

**For more information, contact:**  
the ScienceSketch Project Team at  
[sciencesketch@wested.org](mailto:sciencesketch@wested.org)